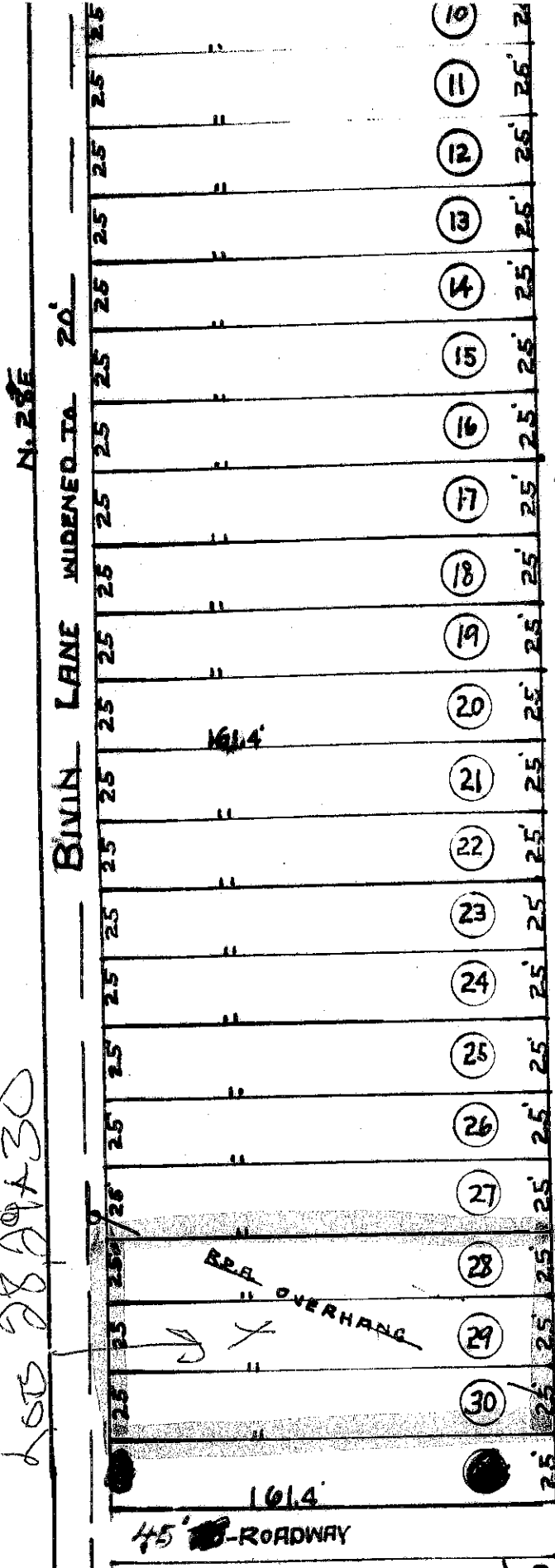
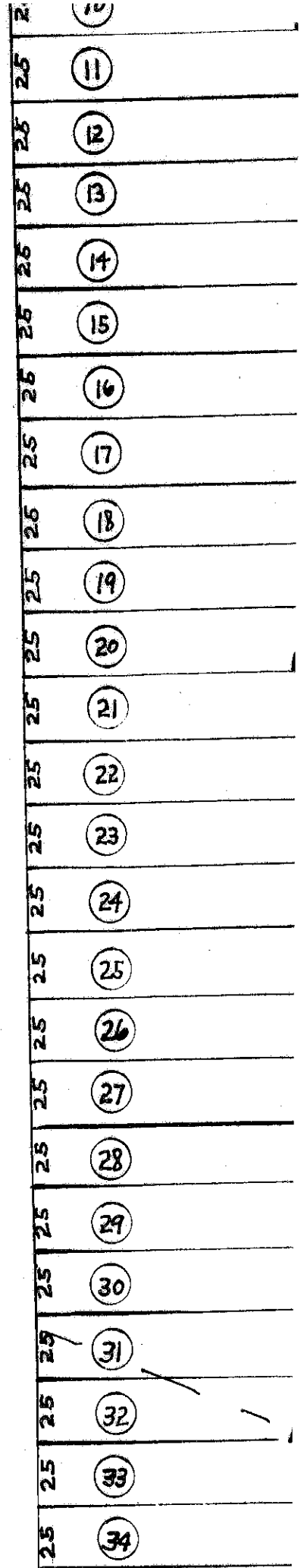


HIGHVIEW HEIGHTS SUBDIVISION - NELSON CO., KY.
 AT AUCTION - JUNE 25-1955 - 2 P.M. - D.S. TIME - BY -
 DEMAREE AND HUBBARD - REALTORS - BARDSTOWN - KY.

655 28 29 A 30



SUNSET DRIVE - 40'



49.65 Ac., BAL. OF TRACT. 1,
 KATHERINE B. & GILBERT BROWN
 - TO -
 ROY RICHIE